

2026 CATALOGUE





TABLE OF CONTENTS

- | | | | |
|-----------|-----------------------------------|-----------|-------------------------------|
| 01 | Black Boards 2 | 17 | Tents 34 |
| 02 | Cases & Accessories 3 | 18 | Trade Show Displays 35 |
| 03 | Conventional Stands 5 | 19 | X-Stands 41 |
| 04 | Flag Stands 6 | 20 | Yard Signs 43 |
| 05 | Grommets & Machines 10 | | |
| 06 | Literature Racks 11 | | |
| 07 | L-Stands 12 | | |
| 08 | Outdoor Stands 13 | | |
| 09 | Panel Displays 17 | | |
| 10 | Poster Frames 18 | | |
| 11 | Poster Stands 21 | | |
| 12 | Promotion Tables 25 | | |
| 13 | Roll Up Stands 26 | | |
| 14 | Standoffs 30 | | |
| 15 | Table Top Stands 31 | | |
| 16 | Table Throws 33 | | |

Toll: 1888 6VANTEX(826839)

Email: sales@vantex.ca



Black Boards



- **Model#: TBB100**
- **Board size: 22" x 31"**
- **Double-sided**
- **Mahogany-finished aluminum frame**
- **Can be written on with both chalk and erasable marker**



- **Model#: TBB500**
- **Board size: 23" x 36"**
- **Double-sided**
- **Solid pine wood frame**
- **Anti-slip rubber feet**
- **Can be written on with both chalk and erasable marker**
- **Replaceable Chalkboard**





Cases & Accessories



- > Model#: CGH2
- > 4.25" diameter
- > Extends up to 50" long
- > Made out of PVC



- > Model#: CGH55
- > 5" diameter
- > Extends up to 50" long
- > Made out of PVC



- > Model#: CGH series
- > Made out of aluminum and MDF
- > Foam cushion inside
- > Available in different sizes



- > Model#: CGH-D series
- > Includes shoulder strap
- > Hard canvas bag
- > Available in different sizes



- > Model#: CGH-R96-BLK
- > PVC hard case with built-in wheels
- > Fits most banner stands, pop up displays, etc.
- > Nylon web straps and buckles to secure lid to base
- > Available in black color



Cases & Accessories



- > Model#: CGH-RS-1A
- > PVC hard case
- > Includes shoulder strap
- > Fits CRS100 series up to 39" wide



- > Model#: CGH-D135-BLK
- > Hard canvas bag with wheels
- > Available in black color only
- > Fits CRS100B or CRS500B



- > Model#: CL1/CL2
- > Halogen or LED
- > For pop up displays



- > Model#: CL4/CL5
- > Halogen or LED
- > For banner stands



- > Model#: DST series
- > 3M tape #9088FL
- > 3" core
- > Available in 1/2" x 50meters and 1" x 50meters



- > Model#: Hook & Loop series
- > Easy peel backing liner
- > 100% Nylon material
- > Available in Black color only

Conventional Stands

Adjustable Banner Stands



- Model#: CPH300 series
- Available sizes: 48" x 36" to 96" x 96" & 64" x 36" to 120" x 96"
- Telescopic steel poles
- Adjustable width and height
- Easy to assemble
- Comes with a canvas carrying bag





Flag Stands

Tear Drop, Feather & Rectangular Flag Stands



- > Model#: CFS100 series
- > Available sizes: approximately 7ft, 11ft, and 16ft high
- > High quality super durable fiberglass pole
- > Variety of base options
- > Suitable for both indoor and outdoor
- > Poles come with a canvas carrying bag
- > Full color dye sublimation printing
- > Single or double sided printing available
- > We also offer a complete package including printing and finishing





Flag Stands

P-Shape Flag Stands



- > **Model#: CFS400 series**
- > **Available sizes: approx 8ft & 12ft high**
- > **High quality super durable fiberglass pole**
- > **Variety of base options**
- > **Suitable for both indoor and outdoor**
- > **Poles come with a canvas carrying bag**
- > **We also offer a complete package including printing and finishing**



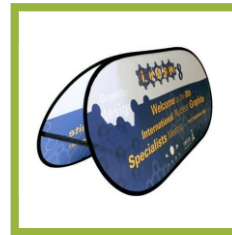


Flag Stands

Fabric A Frames



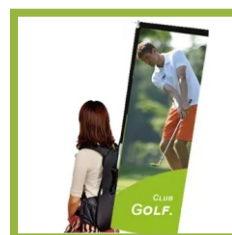
- > Model#: CFS-A series
- > Available sizes: approx 4ft, 6.5ft and 8ft wide
- > High quality foldable frame
- > Suitable for both indoor and outdoor
- > Comes with a carrying bag
- > We also offer a complete package including printing and finishing
- > Ground pegs included



Backpack Flags



- > Model#: CBF Backpack series
- > Approximately 3.5ft to 4.3ft high
- > High quality super durable fiberglass pole
- > Reinforced backpack with adjustable straps
- > Available: tear drop, feather & rectangular
- > We also offer a complete package including printing and finishing





Flag Stands

Pole Banner Hardware



- **Model#: CFS-SB series**
- **Single or side-by-side**
- **Installs to light or street poles**
- **Fits 24" wide banner**
- **Heat-treated cast aluminium**
- **24" fiberglass cross arm**
- **Mounting hardware included**



- **Model#: CFS-WM-24**
- **Fits 24" wide banner**
- **Black powder coated steel**
- **Wall mount**
- **Removable knob**



Grommets & Machines



- **Model#: CGM-1**
- **Hand press grommet machine**
- **Includes #2 die**
- **#1, #3 and #4 dies are also available**
- **Made out of cast iron**
- **Bench mounted / free standing**
- **Soft grip on the handle**
- **#1, #2, #3 & #4 size grommets available**
- **Silver & brass color available**



// Literature Racks



- > **Model#: CLR200**
- > **Collapsible magazine rack**
- > **5 pockets plus extra pocket at the bottom**
- > **Made out of aluminium and acrylic**
- > **Height is 56.5" when set up**
- > **Fits 8.5" x 11" literature**
- > **Comes with a canvas bag or an aluminum case**



- > **Model#: CLR400B**
- > **8-pocket mesh literature rack**
- > **Made out of aluminum frame & fibreglass pole**
- > **Height is 53.5" when set up**
- > **Each pocket measures 9.5" x 12"**
- > **Comes with a canvas bag**



L-stands



- > **Model#: CLS300 series**
- > **Graphic sizes: 23.5" x 64", 31.5" x 72" & 35.5" x 79"**
- > **Aluminum construction**
- > **Foldable banner stand**
- > **Clamp bars**
- > **Comes with a canvas carrying bag**

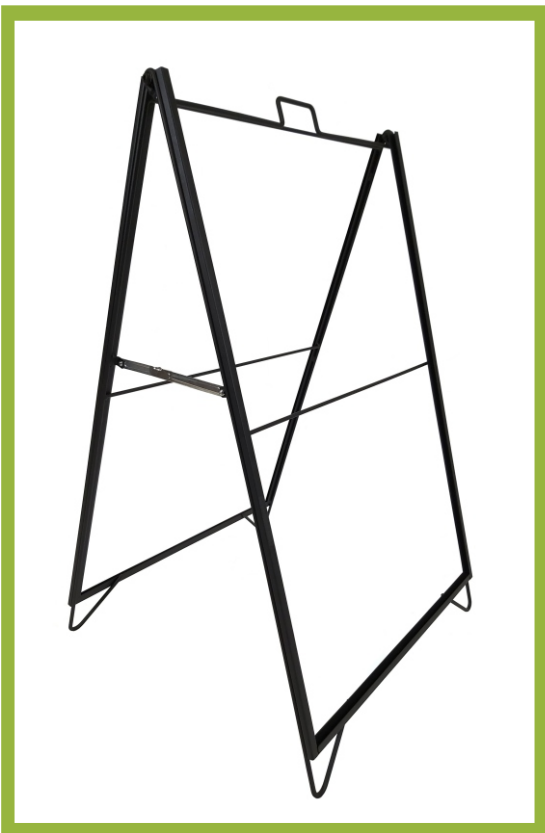


Outdoor Stands

Metal A Frames



- Model#: COS100 series
- Made out of 2cm x 2cm steel tubes
- Fits 2 sheets of coroplast or sintra
- Rubber coated handle for extra comfort
- Weather proof powder coated paint
- Superior quality metal A frame
- Available sizes: 18" x 24", 24" x 18", 22" x 28", 24" x 32", 24" x 36", 24" x 48", 32" x 48" & 36" x 48". White color available in 24" x 36".



- Model#: COS-ECO100-2436
- Powder coated steel construction
- Fits 2 standard 24" x 36" posters
- Channels to slide in the posters
- Top loading
- Fully assembled and ready to use
- Flat packed & individually boxed
- Ideal for both indoor and outdoor use



Outdoor Stands



- > **Model#: COS-P2332-GREY**
- > **Constructed from HDPE**
- > **Fits two 23" x 32" sheets**
- > **Channels to slide in the posters**
- > **Top loading**
- > **Fully assembled and ready to use**
- > **Can be filled with water or sand**
- > **Flat packed & individually boxed**
- > **Ideal for both indoor and outdoor use**



Outdoor Stands

Outdoor Poster Stands



- Model#: COS400A
- Graphic size: 24" x 34"
- Double-sided aluminum snap poster frame
- Clear overlay for graphic protection
- Can be filled with water or sand
- Easy to assemble
- Suitable for both indoor and outdoor use



- Model#: COS410 series
- Available poster sizes: 24" x 36" & 24" x 48"
- Fits 2 substrates, such as coroplast or sintra
- Plastic tank or "H" base
- The plastic tank can be filled with water or sand
- Easy to assemble
- Suitable for both indoor and outdoor use



// Outdoor Stands

Outdoor Banner Stands



- > Model#: COS700-820
- > Graphic size: 80" x 33"
- > Light weight aluminum frame
- > Can be used single-sided or double-sided
- > Can be used as a graphic barrier for events
- > Bungee cords and ground pegs included
- > Comes with a canvas carrying bag



- > Model#: COS800
- > Light weight aluminum frame
- > Can be used single-sided or double-sided
- > PVC bases for water or sand weighting
- > Individual units can be joined together
- > Maximum width & height: 119" x 96"
- > Comes with a canvas carrying bag



Panel Displays

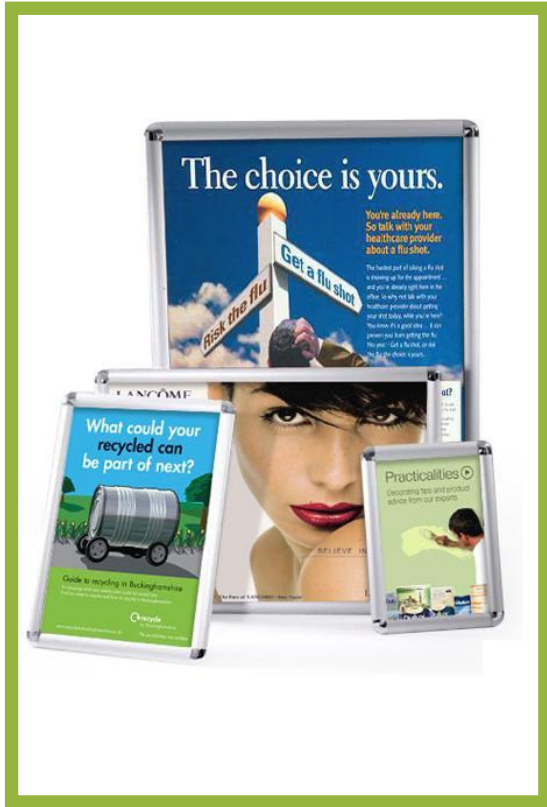


- **Model#: CFP8**
- **8-panel board**
- **Double-sided fabric on each board**
- **Optional small top boards**
- **Each panel size: 23.5" x 35.5"**
- **Fabric area: 21.25" x 33.25"**
- **Top panel size: 23.5" x 8"**
- **Black aluminum frame**
- **360 degrees turnable**
- **Comes with a canvas carrying bag**



Poster Frames

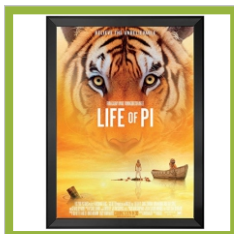
Aluminium Snap Frames



- **Model#: CPF100 series**
- **2.5cm slim aluminum profile**
- **Round corner**
- **Clear overlay for graphic protection**
- **Silver anodized finish**
- **Includes screws and drywall plastic anchors**
- **Available sizes: 8.5" x 11", 11" x 17", 22" x 28", 24" x 30" & 24" x 36"**

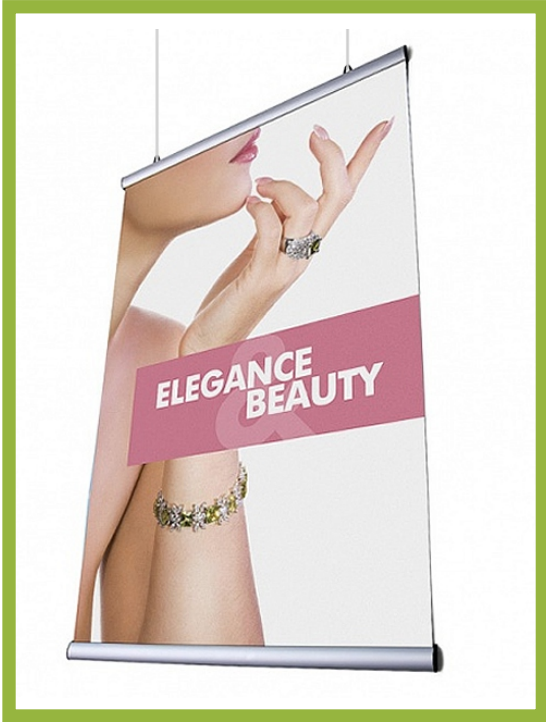


- **Model#: CPF200 series**
- **2.5cm slim aluminum profile**
- **Mitered corner**
- **Clear overlay for graphic protection**
- **Silver anodized finish**
- **Includes screws and drywall plastic anchors**
- **Available sizes: 8.5" x 11", 11" x 17", 22" x 28", 24" x 30", 24" x 36", 30" x 40", 30" x 48" & 36" x 48". Black color available in 8.5" x 11", 11" x 17", 18" x 24" & 24" x 36".**



// Poster Frames

Aluminium Poster Rails



- Model#: CPR1 series
- Available sizes: 2ft, 3ft, 4ft, 5ft & 6ft
- Custom sizes are also available up to 6ft
- Clamp aluminum bar
- Slide-in hooks
- PVC end caps



- Model#: CPR3 series
- Available sizes: 2ft, 3ft & 4ft
- Holds upto 5mm coroplast, sintra, or foam board
- Slide-in hooks
- PVC end caps



Poster Frames

PVC Poster Rails



- > **Model#: CPR2 series**
- > **Available sizes: 2ft, 3ft, 4ft, 5ft & 6ft**
- > **Custom sizes are also available up to 6ft**
- > **Clamp PVC bar**
- > **Slide-in hooks**



Poster Stands



- **Model#: CPS100A series**
- **Available sizes: 11" x 17" and 22" x 28"**
- **Snap aluminum poster frame with stand**
- **Adjustable height**
- **Clear overlay for graphic protection**
- **Indoor use only**



- **Model#: CPS200-1**
- **Graphic size: 24" x 34"**
- **Snap aluminum poster frame**
- **3.2cm aluminium profile**
- **Double-sided**
- **Clear overlay for graphic protection**
- **Indoor use only**



- **Model#: CPS400**
- **Holds upto 48" x 33" signs**
- **Aluminum easel stand**
- **Adjustable height**
- **Comes with a carrying bag**

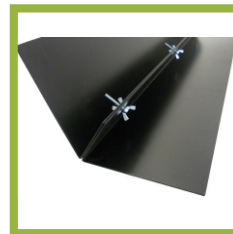


Poster Stands

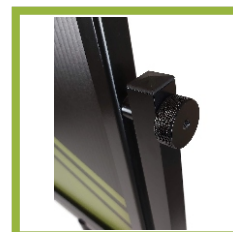
Sign Holder



- > **Model#: CPS500 series**
- > **Available sizes: 12", 24", 36" & 48"**
- > **Made out of steel**
- > **Includes nuts and bolts**
- > **Holds up to 1/2" rigid board**



- > **Model#: CPS600-1117**
- > **Poster size: 11"x 17"**
- > **Double-sided**
- > **Black powder coated steel**
- > **Quick assembly**
- > **Holds 4mm coroplast or foam core**
- > **1/4" deep top-insert slot**





Poster Stands



- > **Model#: CPS-RS-2228-N**
- > **Poster size: 22"x 28"**
- > **Double-sided**
- > **Black powder coated steel**
- > **Quick assembly**
- > **3/8" deep top-insert slot**
- > **Indoor use only**



- > **Model#: CPS700-1117-D**
- > **Graphic size: 11"x 17"**
- > **Double-sided snap poster frame**
- > **Accepts 2 posters**
- > **Clear overlay for graphic protection**
- > **Silver anodized finish**
- > **Made out of aluminum**
- > **Indoor use only**





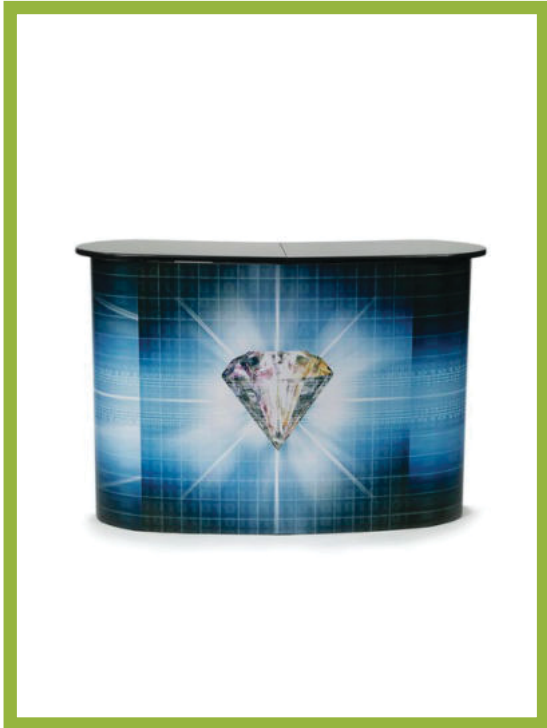
Poster Stands



- > **Model#: CPS-HS-8511-BLK**
- > **Black powder coated**
- > **8.5" x 11" snap frame**
- > **Height adjustable**
- > **14" diameter round steel base**
- > **Indoor use only**



Promotion Tables



- **Model#: CPT300**
- **Size: approximately 51" x 16" x 38"**
- **Light weight yet strong and sturdy**
- **Aluminum pop up frame**
- **Black countertop**
- **Can be easily dismantled for storage**
- **Comes with a canvas carrying bag**



Roll Up Stands

Standard Roll Up Stands



- Model#: CRS100 series
- Available graphic visual sizes: 23.5" x 77", 33" x 77", 36" x 77", 39" x 77" & 47" x 77"
- Interlocking 3-in-1 pole
- Clamp aluminum top bar
- Comes with a padded carrying bag
- Aluminum cartridge roll
- 1-year limited warranty
- Black color available in 33" x 77"



Standard Double-Sided Roll Up Stands



- Model#: CRS200A
- Double-sided retractable banner stand
- Graphic visual size: 33" x 77"
- Interlocking 3-in-1 pole
- Clamp aluminum top bar
- 1-year limited warranty



Roll Up Stands

Adjustable Roll Up Stands



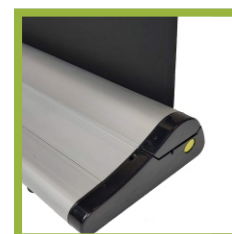
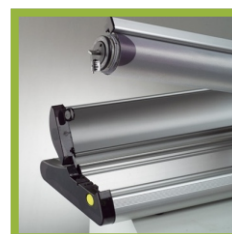
- Model#: CRS300A
- Graphic visual size: 33" wide x 62" to 87" high
- Aluminum telescopic pole
- Clamp aluminum top bar
- Comes with a padded carrying bag
- 1-year limited warranty



Deluxe Roll Up Stands



- Model#: CRS400A
- Graphic visual size: 33" wide x 39" to 94" high
- Aluminum telescopic pole
- Clamp aluminum top bar
- Replaceable aluminum cartridge
- Comes with a padded carrying bag
- Adjustable feet for uneven surfaces
- 1-year limited warranty



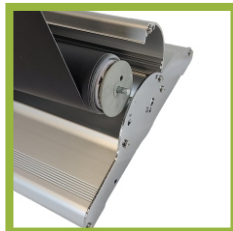


Roll Up Stands

Premium Roll Up Stands



- Model#: CRS510 series
- Available graphic visual sizes: 24" x 79", 33" x 79", 36" x 79", 39" x 79" & 48" x 79"
- Interlocking 3-in-1 pole
- Clamp aluminum top bar
- Replaceable aluminum cartridge
- Paperless graphic installation
- Comes with a padded carrying bag
- Adjustable feet for uneven surfaces
- 1-year limited warranty
- Black color available in 33" x 79"

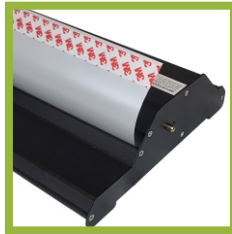


Roll Up Stands

Wide Roll Up Stands



- **Model#: CRS700-60**
- **Graphic visual size: 59" x 79.5"**
- **Black powder coated**
- **Interlocking 3-in-1 pole**
- **High quality aluminum**
- **Clamp aluminum top bar**
- **Adjustable feet for uneven surfaces**
- **Comes with a canvas carrying bag**
- **1-year limited warranty**





Standoffs



- > Satin finished aluminum standoffs
- > Available sizes: 1.3cm x 1.9cm, 1.6cm x 2.5cm, 1.9cm x 2.5cm, 1.9cm x 3.5cm, 2.5cm x 2.5cm, 2.5cm x 3.5cm, 3cm x 2.5cm, 3cm x 3.5cm



- > Chrome finished aluminum standoffs
- > Available sizes: 1.3cm x 1.9cm, 1.6cm x 2.5cm, 1.9cm x 2.5cm, 1.9cm x 3.5cm, 2.5cm x 2.5cm, 2.5cm x 3.5cm, 3cm x 2.5cm, 3cm x 3.5cm



- > Black finished aluminum standoffs
- > Available sizes: 1.3cm x 1.9cm, 1.6cm x 2.5cm, 1.9cm x 2.5cm



- > Brushed stainless steel standoffs
- > Available sizes: 1.3cm x 1.9cm, 1.6cm x 2.5cm, 1.9cm x 2.5cm, 2.5cm x 2.5cm

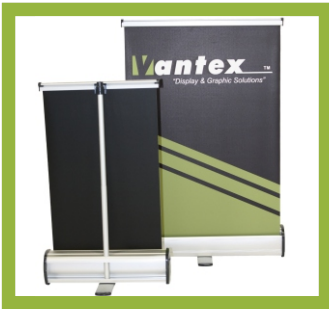


- > Chrome finished corner grip standoffs
- > Available sizes: 2.5cm x 2.5cm
- > Made out of aluminum

// Tabletop Stands



- > **Model#: CRS600B-D**
- > **Double-sided**
- > **Graphic visual size: 11.75" x 16.5"**
- > **Lightweight yet stable**
- > **Aluminum tabletop roll up stand**



- > **Model#: CRS-TT series**
- > **Graphic visual size: 12" x 18" and 18" x 24"**
- > **Aluminum tabletop roll up stand**
- > **Clamp aluminum top bar**
- > **Dark grey plastic end caps**
- > **Comes with a carrying bag**



- > **Model#: CXS500**
- > **Graphic size: 11" x 17"**
- > **Lightweight yet stable**
- > **Made out of PVC**

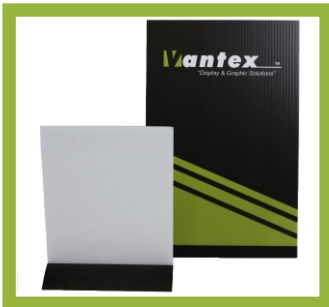


- > **Model#: CPS300 series**
- > **Available sizes: 8.25", 11.75", 24" & 36"**
- > **Available in silver and black color**
- > **Fits 4mm substrate, such as coroplast or foam core**
- > **Made out of Aluminum**

// Tabletop Stands



- **Model#: CLS500B**
- **Graphic size: 11.75" x 16.75"**
- **Lightweight yet stable**
- **Made out of Aluminum**



- **Model#: CPS-TT series**
- **Available sizes: 8.5", 11" & 24"**
- **Tabletop aluminium poster holder**
- **Black powder coated**
- **Fits 4mm substrate, such as coroplast or sintra**
- **Made out of aluminum**



- **Model#: CAD-TT series**
- **Available sizes: 8.5" x 11" & 11" x 17"**
- **Tabletop acrylic sign frame**
- **Posters slide in from the sides**
- **Viewable from both sides**



Table Throws

- For standard 4ft, 6ft & 8ft tables
- Custom sizes and water proof fabric also available in select models
- 100% polyester fabric (Fire retardant fabric also available on some models)
- Dye sublimation printing
- Table runners also available
- We offer standard full size, standard open back, fitted full size, fitted open back, stretch and corner pleated table throws





Tents



- > **Model#: CCT series**
- > **Available sizes: 5ft x 5ft , 6.5ft x 6.5ft, 10ft x 10ft, 10ft x 15ft & 10ft x 20ft**
- > **Heavy duty commercial grade corrosion resistant and fully anodized 1.57" diameter hexagon aluminum frames**
- > **Pull pin slider for quick lock and release**
- > **500 denier polyester fire retardant (CAN/ULC-S109-14) tent top**
- > **Back walls and side skirts are optional**
- > **Full Color Dye sublimation printing**
- > **Includes a roller bag**
- > **Optional iron weights, sand bags, gutters, multi tent connectors, ground pegs and flag pole holder kits are also available**



Hanging Display Systems



- Model#: CHD series
- Different shapes and sizes available
- Design to suspend from ceilings to create high visual impact
- Can be suspended one within another
- Lightweight framework that clicks together effortlessly
- Aluminum tube frames that are durable and interchangeable
- Seamless pillow case mounting stretch fabric with industrial zipper
- High quality dye sublimation printed fabric
- No tools required
- 5-year limited warranty on frames
- Frames come with a bag
- Our fabric meets CAN/ULC S109-14 standard for fire safety



// Trade Show Displays

Tension Fabric Pop Up Displays



- **Model#: CPD200 series**
- **Available sizes: 90" x 90" and 119.25" x 90"**
- **Matte finished aluminum frames**
- **100% polyester seamless wrinkle free stretch fabric**
- **Comes with two halogen lights and a hard case**
- **5ft tabletop version also available**
- **Fabric printing is also available**
- **Our fabric meets CAN/ULC S109-14 standard for fire safety**
- **10-year limited warranty on frames**

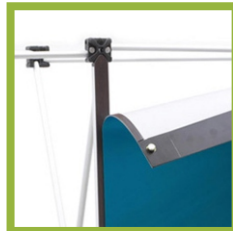


// Trade Show Displays

Premium Pop Up Displays



- Model#: CPD100 series
- Available sizes: 8ft x 8ft and 10ft x 8ft
- Self-locking matte finished aluminum frames
- Quick assembly within 10 minutes
- Magnetic channel bars
- Lightweight yet stable
- 10-year limited warranty on frames
- Comes with 2 halogen lights and a podium hard case



// Trade Show Displays

Tension Fabric Systems



- > **Model#: CTF series**
- > **Available in curve, straight, S-shape and U-shape**
- > **Available in different sizes**
- > **1.25" clear anodized snap tube aluminum frame system**
- > **Fabric printing is also available**
- > **Seamless pillow case mounting stretch fabric with industrial zipper**
- > **5-year limited warranty on frames**
- > **Our fabric meets CAN/ULC S109-14 standard for fire safety**
- > **Tabletop frames, tension fabric tables and towers are also available**
- > **Comes with a carrying bag**

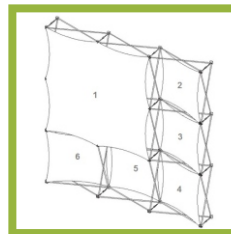
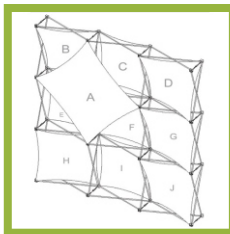


// Trade Show Displays

Geometric-Shaped Pop Up Displays



- Model#: CPD300 series
- Available sizes: 8ft x 8ft and 10ft x 8ft
- Self-locking matte finished aluminum frames
- Lightweight yet stable
- 10-year limited warranty on frames
- Comes with 2 halogen lights and a hard case
- Fabric printing is also available



Rubber-Edge Tension Fabric Displays

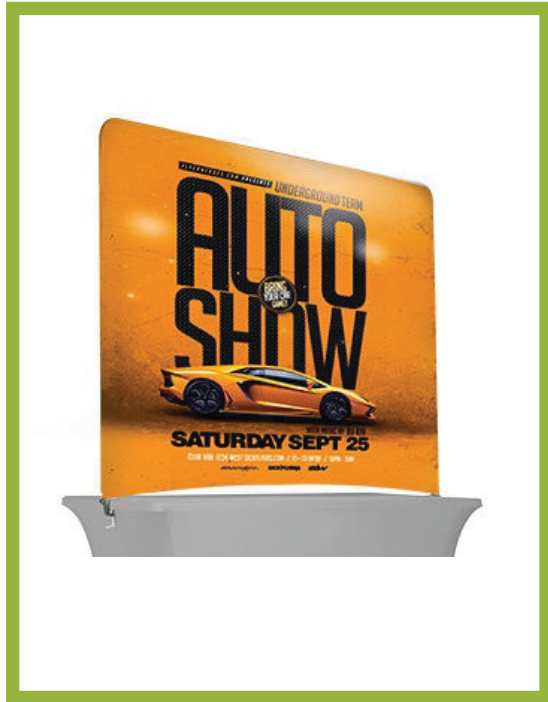


- Model#: CPD-SEG series
- Available sizes: 87.5" x 87.5" and 116" x 87.5"
- Self-locking aluminum frames
- Fabric printing is also available
- 100% seamless wrinkle free stretch fabric
- Boarderless exhibition structure
- 10-year limited warranty on frames
- Comes with 2 halogen lights and a hard case



// Trade Show Displays

Tabletop Tension Fabric Displays



- Model#: CTF-TT series
- Available for standard 6ft and 8ft tables
- 1" diameter interlocking black powder coated aluminum poles
- Seamless pillowcase style fabric
- Comes with a canvas carrying bag
- 5-year limited warranty on frames



LED Backlit Tension Fabric Displays



- Model#: CTF-LB-STR series
- Available sizes: 4ft, 8ft, 10ft & 20ft wide
- Standard height: 89"
- 12V LEDs
- Seamless pillowcase style fabric
- Interlocking aluminum poles
- Comes with a canvas carrying bag
- 5-year limited warranty on frames





X-Stands

Standard X-stands



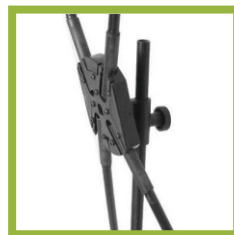
- > Model#: CXS200 series
- > Graphic sizes: 24" x 64", 28" x 72" & 34" x 76"
- > Fiberglass pole and metal construction
- > Foldable banner stand
- > Designed for a banner with grommets in each corner
- > Comes with a nylon carrying bag



Economy X-stands



- > Model#: CXS300 series
- > Graphic sizes: 24" x 64" & 28" x 72"
- > Complete fiberglass pole construction
- > Foldable banner stand
- > Designed for a banner with grommets in each corner
- > Comes with a nylon carrying bag





X-Stands

Bamboo X-stands

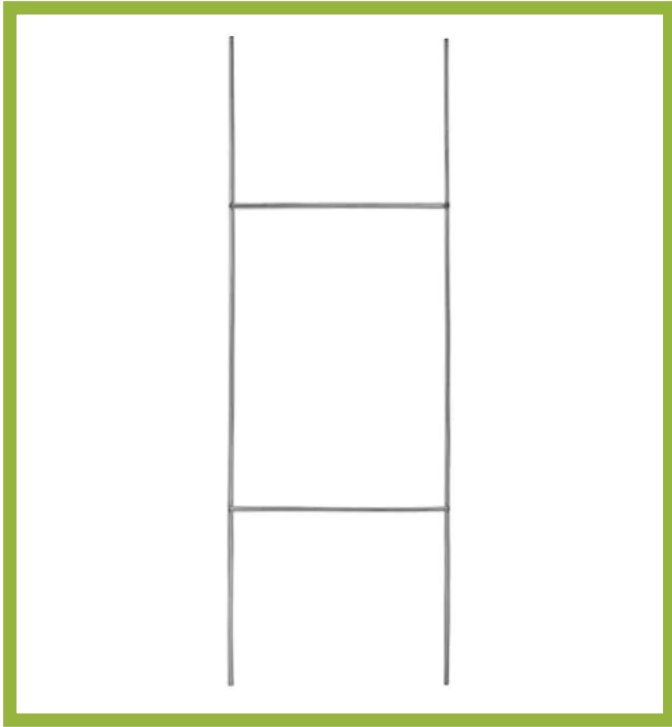


- **Model#: CXS-BB series**
- **Graphic sizes: 24" x 64" & 24" x 72"**
- **Made out of bamboo**
- **Foldable banner stand**
- **Designed for a banner with grommets in each corner**
- **Comes with a canvas carrying bag**

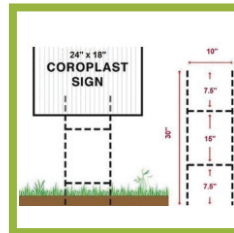




Yard Stands

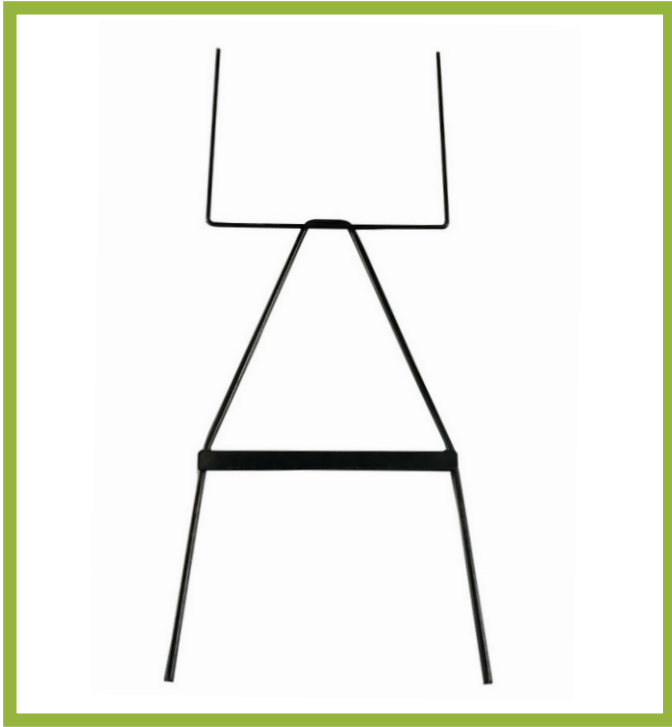


- > H-wire step stakes
- > Available size: 10" x 30"
- > 9 guage galvanized wire
- > Fits 24" wide x 18" high coroplast sign
- > Comes 50 in a box





Yard Stands



- > **Model#: Y-stake-BLK**
- > **Powder coated black steel**
- > **Fits 24" wide x 24" high coroplast sign**
- > **Comes 10 in a box**



Warranty Information

We stand behind our products. All products (excluding printing media and printing) sold by Vantex are warranted against defects in hardware material and workmanship for a period of one <1> year (unless otherwise stated) from the date of shipment arrival within Canada. Under this warranty, we are limited to correcting or replacing, at our discretion, any hardware or parts that shall be returned to us. Products are to be free from defects in hardware material and workmanship if properly used under normal conditions. This warranty shall not apply to any products that must be replaced because of extreme weather condition, or normal wear, or that have been subject to misuse, abuse, negligence, mishandling, misapplication, improper installation or accident, or that have been altered by someone other than Vantex. This warranty also does not cover damages which occurred in shipment or failures which are caused by products not supplied by Vantex. If you believe any Vantex product you have purchased has a defect in material or workmanship or has failed during normal use within the warranty period, please contact us at 604.575.7184 for assistance. The customer will be solely responsible for shipping the product to Vantex for inspection. If we find the product is a defect within the warranty period, we will repair (including labor & parts), exchange, or replace the same product at no cost and will ship via 'ground' service at our expense. All shipments of repaired or replaced products by Vantex will be from the Vantex warehouse in Surrey, BC.

Note: Due to the nature of the fabric and weather conditions, Vantex cannot guarantee or predict how long the fabric and color will last in an outdoor environment.